



## FLAT BAR, ANGLE, SQUARE TUBE

Secure your structure with only the most dependable aluminum extrusions on the market. Manufactured from the highest-quality aluminum stock, our angles and flat bar extrusions are designed for structural use and mounting brackets on all fabrications, including leaning posts and grab rails.

### FEATURES & BENEFITS

#### A40-0822, A40-0363, A40-0364, A40-0365

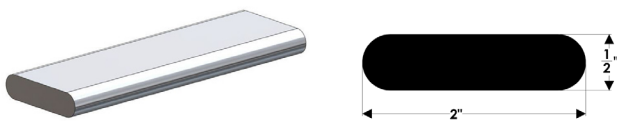
- Designed for mounting brackets on all fabricated applications
- Corner radius .031-inch

#### A40-1043

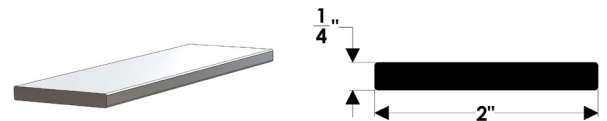
- Extruded for maximum strength
- Radius .25-inch

#### A42-0362

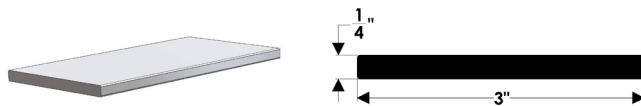
- Close tolerance to provide consistent use with rail and top fittings
- Fits most canvas top and fabrication applications
- Adds strength and structural integrity to marine fabrications
- Also offers superior strength to standard extruded tube



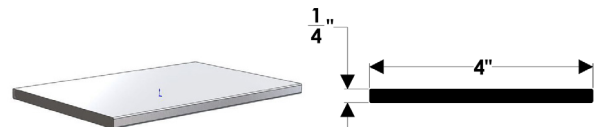
A40-0822



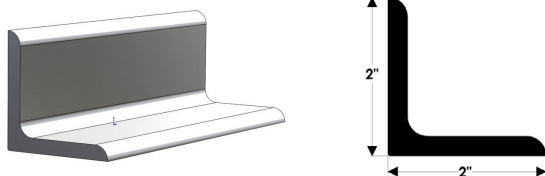
A42-0363



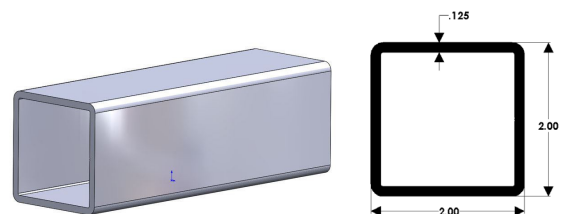
A42-0364



A42-0365



A40-1043



A42-0362



## FLAT BAR, ANGLE, SQUARE TUBE

Secure your structure with only the most dependable aluminum extrusions on the market. Manufactured from the highest-quality aluminum stock, our angles and flat bar extrusions are designed for structural use and mounting brackets on all fabrications, including leaning posts and grab rails.

PART #	DESCRIPTION	LENGTH	FINISH
A42-0362BXY24	2" Square Tube	24'	Brite Dip
A42-0363AEY12	2" Flat Bar	12'	Mill (Unfinished)
A42-0363BSA12	2" Flat Bar	12'	320 Grit Brite Anodized
A42-0363BXY12	2" Flat Bar	12'	Polished Brite Anodized
A42-0364AEY12	3" Flat Bar	12'	Mill (Unfinished)
A42-0364BSA12	3" Flat Bar	12'	320 Grit Brite Anodized
A42-0364BXY12	3" Flat Bar	12'	Polished Brite Anodized
A42-0365BXY12	4" Flat Bar	12'	Mill (Unfinished)
A42-0365AEY12	4" Flat Bar	12'	Polished Brite Anodized
A40-0822AEY10	2" Radius Flat Bar	10'	Mill (Unfinished)
A40-0822BXY12	2" Radius Flat Bar	12'	Polished Brite Anodized
A40-1043BXY20	2" X 2" Structural Angle	20'	Polished Brite Anodized